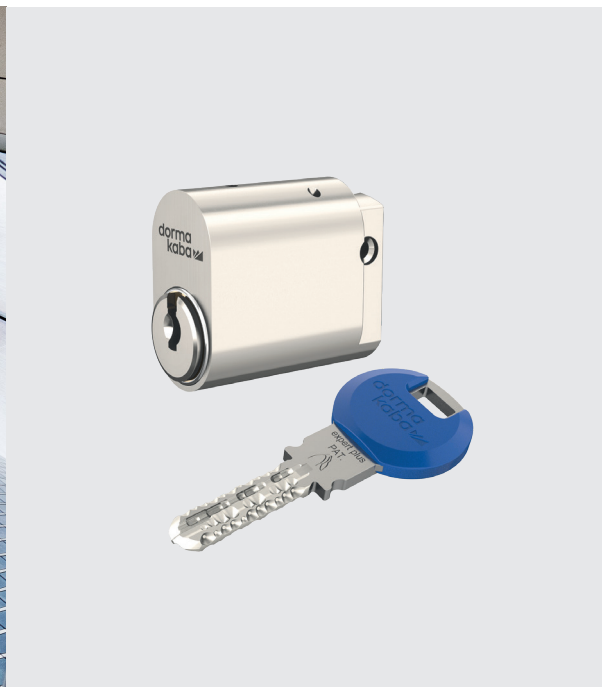


# expert plus

## Highest quality, reliability & security

Patented until 2033



# expert plus patented until 2033

dormakaba stands for reliability, security,  
highest quality and sustainability.

The new coding on the key tip cannot be produced with conventional key milling machines. If this code is not present, the key can be neither inserted nor turned. New shapes of the tumbler pins let the key glide smoothly into the keyway.

Keys are only available from dormakaba or from authorised dealers.



# Keeping premises safe

The expert plus security lock cylinder system with extra protection and a long key patent life.

## Reversible key from the inventor

When dormakaba invented the reversible key, for the very first time it did not matter which way up the key was inserted. Today the reversible key stands not only for user convenience, but also for high permutation capacity and highest security against illegal key copies and opening by manipulation such as picking or bumping.

## Certified security

dormakaba expert plus holds many international certificates against opening the cylinder by drilling, pulling, picking and bumping.

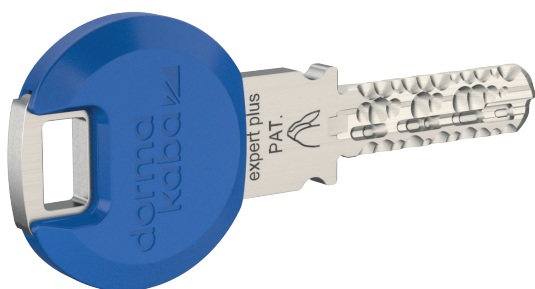
## dormakaba Modular

The dormakaba Modular System allows Locksmiths to rebuild cylinders on site to other lengths or even other cylinder types with little effort.

## Advantages at a glance:

- Patent valid until 2033
- Key blanks are not available for retail sale
- Duplicate keys only issued with correct authorisation
- The key can be inserted either way up.
- A single key can be used to open a variety of different locks
- High protection against opening by the bumping method and against drilling
- Can be upgraded to an electronic access control systems with transponder clip (not available in the large head)
- Unique key codes for dormakaba authorised dealers
- Choose from two different key shapes and up to 12 different key clip colours

# More than mechanical security



## One key to replace many

- 01** Car park entry
- 02** Office
- 03** Main foyer
- 04** Gymnasium
- 05** Retail level
- 06** Multi user entry

# Keying options

## Offering custom keyed options

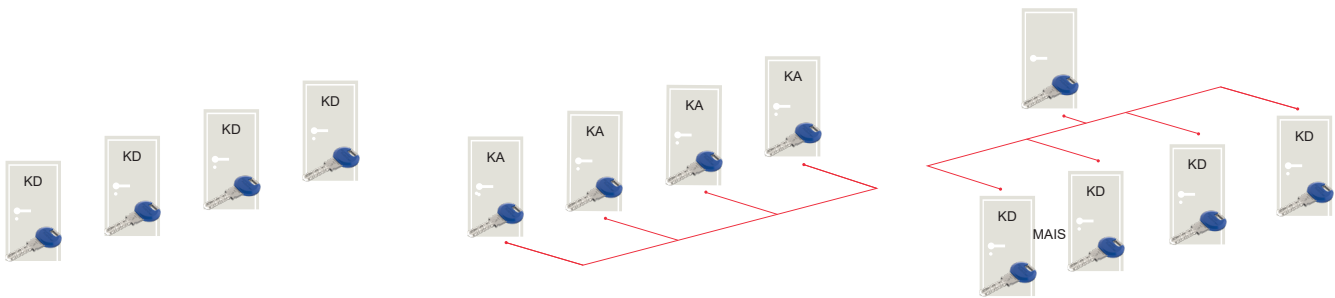
The expert plus key system allows different keying options ranging from a simple keyed alike system operated through the one key to a custom designed grand master key system, where multiple levels of access can be introduced.

The modular design allows adaptation to all cylinder housings and the modular insert is easily assembled.

The smooth operation of the system avoids key breakages and the highly sophisticated positioning of pins (22 pins) caters for large keying systems whilst maintaining the same level of security.

### Keying Combinations

Keyed Alike | Keyed to Differ | Maison Keyed System | Master Key System | Grand Master Key System



### Key to Differ (KD)

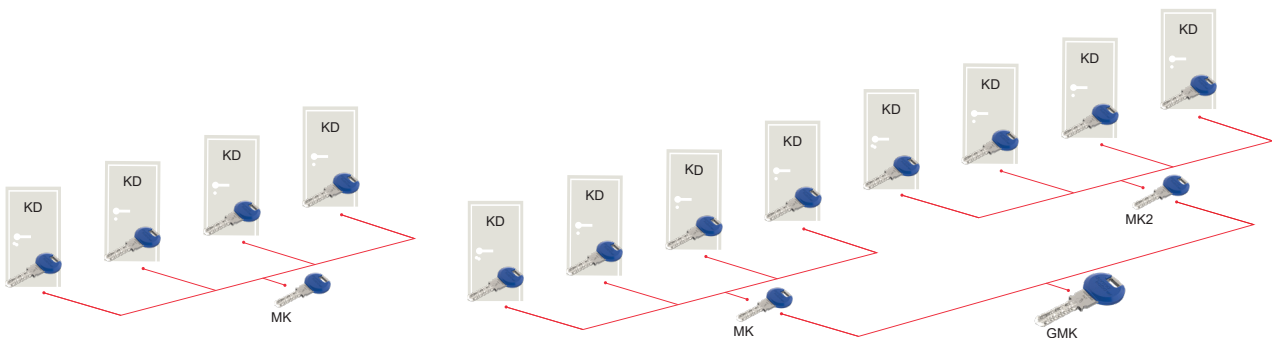
Each cylinder can be operated by its own key.

### Keyed Alike (KA)

Several cylinders can be opened by the same key.

### Maison (MAIS)

Each key opens its own cylinder and the maisonned entrance cylinder (e.g. the main entrance in an apartment block).



### Master Key System (MK)

Each cylinder is opened by its own individual key and by the master key.

### Grand Master Key System (GMK)

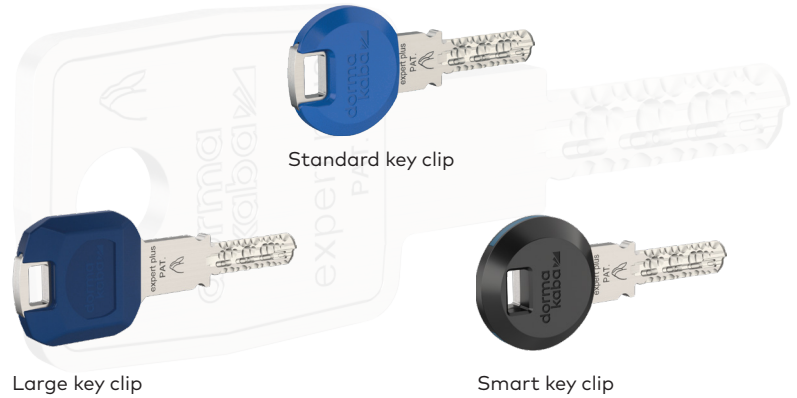
Each cylinder is opened by its own individual key, the respective master key and the grand master key.

# Key clips

dormakaba reversible keys are made of nickel silver and are extremely wear resistant for regular use.

## Benefits

- Standard key clip in 12 colours
- Large key clip in 12 colours available
- The large key head has a greater surface area which can aid the elderly in aged care facilities or the disabled operate their locks with ease.
- Smart key clip in 6 colours
- Smart key clip with RFID transponder for electronic access systems



## KEY CLIPS



## LARGE KEY CLIPS



## SMART KEY CLIPS



# Quick Release Colour System

## Construction Keying

The dormakaba expert plus Quick Release Colour system is designed and manufactured in Australia, it has been created for the purpose of maintaining a high level of security throughout the different phases of construction, or when a key has been lost.

Our Quick release system allows the holder of the removable key to release the insert only, replacing it with another insert of a different colour and combination. A re-key completed in seconds.

A convenient way of providing continued security during the different phases of construction is to use our Quick Release colour system. With 5 colours to choose from, each colour can represent a different level of access on your building site. The final Master keyed insert is offered as full metal face.

### How does the quick release colour system work out on site?

In parallel with the door hardware fit out our construction insert, and housing can be fitted throughout the entire construction site according to the door schedule. These inserts can be keyed to the builders' requirements, commonly the inserts at this point are keyed alike.

Our inserts can be removed by the project manager using the removal key. These inserts can be kept by the builder to utilise on future building sites, making it cost effective for all parties.

dormakaba can offer up to 6 stages of different phases.



Stage 1

Stage 2

Stage 3



Stage 4

Stage 5

Final Stage

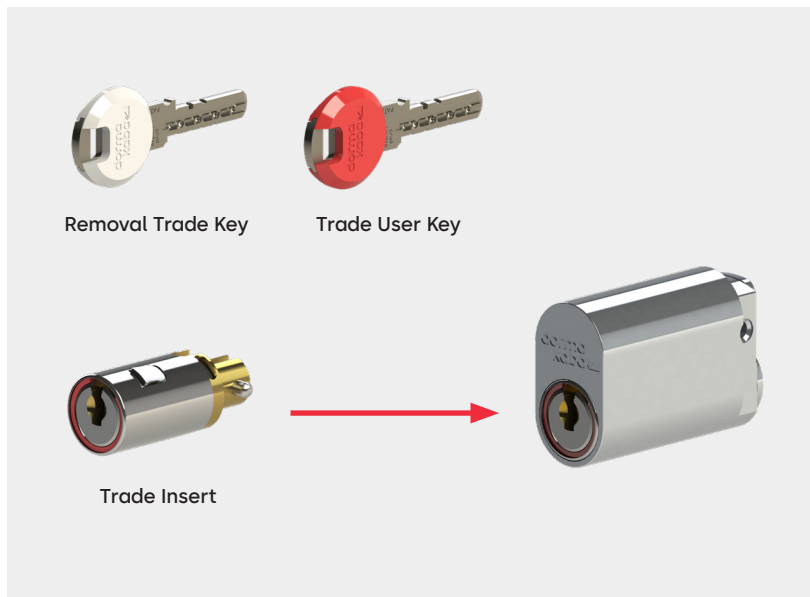
### Features:

- No screwdriver required
- Re-key within seconds
- 5 colour rings available for cylinder
- 12 colour key heads available
- Full metal face insert for final keying
- Available in oval and rim
- Cost effective
- High security, each insert contains 22 pins

This system is available through our expert plus dealer network across Australia and New Zealand.

For more information, please check out our video on our web site [www.dormakaba.com.au](http://www.dormakaba.com.au)





## Phase One

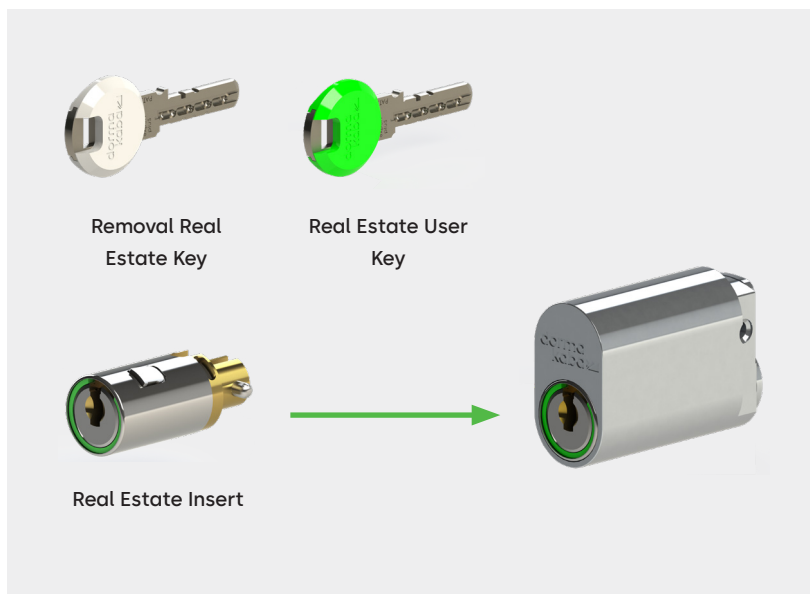
### Construction Phase

Construction keying is commonly used on site during the construction phase of a building, where all locks are keyed alike allowing access for all trades.

The Removal Key allows the Project Manager to install the insert and remove the insert.

The Trade User Key is given to the trades who are required to gain access during the construction stage such as Electricians, Plumbers, Carpenters etc.

For ease of identification of the current keying status the key colour and ring colour are matched.



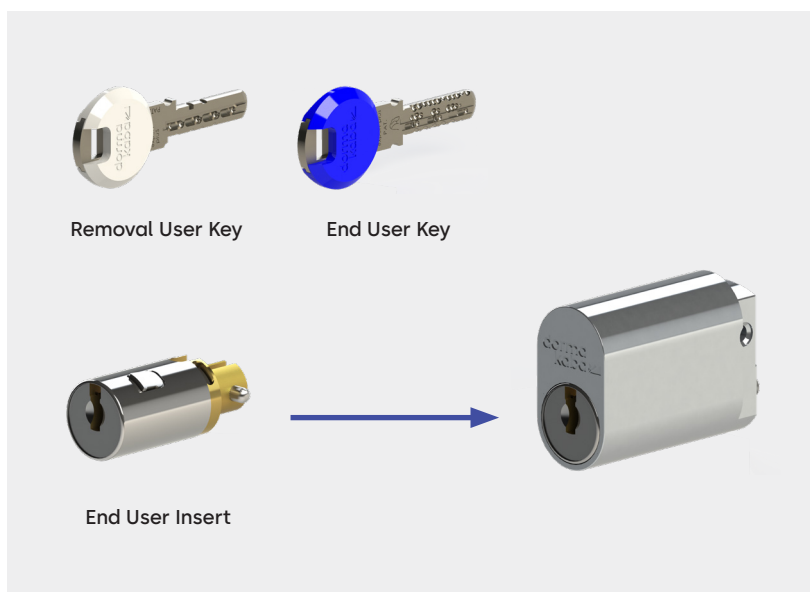
## Phase Two

### Hand over to Developer/Real Estate

Once an apartment is completed and trades no longer need to gain access. The apartment may be handed over to a Real Estate Agent.

Removal Trade Key is inserted into the cylinder removing the red insert.

Using the Removal Real Estate Key with a new combination, an insert with a green ring is placed into the cylinder keyed to a new combination, thus blocking out the previous trade keys.



## Phase Three

### Owner of Apartment takes occupancy

Once the apartment has been sold and the end user takes possession of their apartment.

The Project Manager inserts the Removal Real Estate Key into the cylinder removing the green insert.

Using the Removal User Key with a new combination, a final all metal face master keyed insert is placed into the cylinder keyed to a new combination, thus blocking out the previous real estate key.

# Cleaner

## Professional care and maintenance

dormakaba design and supply fine mechanical products, offering the highest levels of precision. It is therefore important that they are regularly maintained.

The cleaner is specifically designed to maintain and clean all kinds of lock cylinders. Decades of practical experience and laboratory-proven physical properties put the new formula in a class of its own.

Unlike many of the products available from other manufacturers, the cleaner does not thicken, eliminating the need to constantly re-lubricate the lock cylinder.

Our cleaner offers exceptional corrosion protection for steel, nickel silver and brass, and has no long-term effect on the surfaces. It can be used on all lock cylinders without restriction (including mechatronic products and car cylinders).

The new cleaner formula is free of heavy metals, making it GHS-compliant (as per declaration on hazardous substances).

In addition to its markedly improved water displacement, it also guarantees a higher level of lubricity. The spray remains in liquid form even in cold environments and can be used at temperatures as low as -25 °C.

The cleaner is available in two sizes 60/200 ml.

The 60ml cleaner is a pump spray and is free from propellant gas.

All sizes offer extremely economical dosing.

### Benefits

- High level of corrosion protection
- Outstanding cleaning and lubrication properties
- Extremely economical dosing
- Suitable for use at temperatures as low as -25 °C
- Free of heavy metals
- Silicone-free
- Exceptional long-lasting effect



The practical packaging of the 60 ml can is also suitable for use as a counter display. (see on the picture above)

Item	Article Number	Description
60/KABA	9400000003992	DORMAKABA CLEANER PUMP SPRAY 60ML
200/KABA	9400000000621	200ML DORMAKABA CLEANER SPRAY

## Instruction for use

Shake the Cleaner well and screw the small red tube onto the valve (be sure not to simply insert it, as otherwise the tube could buckle). Next, hold the tube in the keyhole and operate the pump. Insert the key and turn it fully several times in both directions to ensure an even coating of lubricant inside the cylinder lock. After turning the key in the cylinder several times, wipe it clean with a soft cloth until no residue remains.

To ensure smooth lock cylinder operation in the long term, it is recommended to use the Cleaner at least once a year - or more frequently depending on how often the lock cylinder is used.

Please note: never use viscous substances (such as oil) to lubricate the lock cylinder. Only cleaning products that do not contain any corrosive substances may be used.

### Technical data

#### Operating temperature range

- Use at -25 °C to +60 °C
- Storage: -20 °C to +50 °C

#### Packaging unit/sizes

- 12 x 60 ml
- 6 x 200 ml

#### Electrical conductivity

- Dielectric

#### Languages

- Application/hazard information available in 18 languages (can be detached from the can)

The cleaner can be used with all dormakaba reversible and serrated key systems.



#### Step 1

Put red straw in nozzle



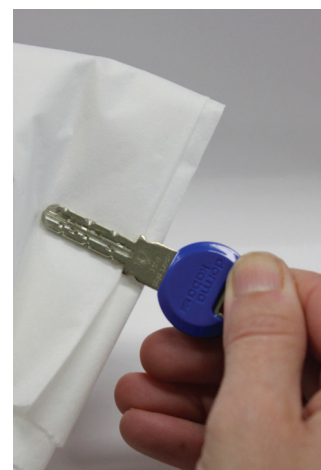
#### Step 2

Spray into cylinder 1-2 squirts



#### Step 3

Insert & remove key a couple of times



#### Step 4

Wipe key down with rag



Door  
Hardware



Electronic  
Access & Data



Mechanical  
Key Systems



Lodging  
Systems



Entrance  
Systems



Interior Glass  
Systems



Safe  
Locks



Service

## Our Sustainability Commitment

We are committed to fostering a sustainable development along our entire value chain in line with our economic, environmental and social responsibilities toward current and future generations.

We seek an open, transparent dialogue with all stakeholders to define strategies and actions based on clear targets and continuous improvement, and we actively report on our progress.

**dormakaba New Zealand  
Head Office**  
Building P, 61-69 Patiki Road  
Avondale, Auckland 1026

T: 0800 436 762  
info.nz@dormakaba.com  
**dormakaba.co.nz**

**dormakaba Australia  
Head Office**  
12-13 Dansu Court  
Hallam VIC 3803

T: 1800 675 411  
info.au@dormakaba.com  
**dormakaba.com.au**